



EXCELLENCE  
in System Verification & Commissioning



VISIBLEENERGY



# What We Can Do For Your Project?

Visible Energy have a professional and dedicated team with over 30 years exemplary experience in a number of sectors including:

Electrical Installations | Retail | Domestic | Pharmaceutical | Petrochemical  
Heavy Industry | Food & Beverage | Banking HQ's | Hospitals | Airports

What can we do for your project?

Electrical installation | Fault diagnosis & rectification | Home lighting design  
Automation | Trade training scheme | Electrical & HVAC testing | Design review for commission ability  
Advise on equipment selection and suitability | Factory witness and acceptance testing  
On-site services investigations | commissioning services | Post investigation solutions  
Provision of testing solutions | Management of testing solutions Management of post investigation solutions  
System validation | Site acceptance testing | Insurance liability testing



Tel: +971 424 08111 | Email: [info@visible-energy.net](mailto:info@visible-energy.net)

[www.visible-energy.net](http://www.visible-energy.net)



## MEP Testing & Commissioning

The main objective of commissioning is to affect the safe and orderly handover of the system from the constructor to the owner, guaranteeing its operability in terms of performance, reliability, safety and information traceability. Additionally, when executed in a planned and effective way, commissioning represents an essential factor for the fulfilment of schedule, costs, safety and quality requirements of the project.

Visible Energy Technical Services will never compromise on quality. Within our industry, the safety and assurance of our customers and their assets is paramount.

Our engineering team, comprising of highly qualified, time served engineers, have a primary objective of verifying the integrity of the installation, effective operation, and effective performance based on project design. The testing of the facility, systems, and/or equipment provides verification, identifies issues/discrepancies and if designed and constructed properly ultimately enhances the facilities overall quality, control, performance and efficiency which in turn provides increased sustainability and cost effectiveness.

S Y S T E M  
T E S T I N G

Tel: +971 424 08111 | Email: [info@visible-energy.net](mailto:info@visible-energy.net)

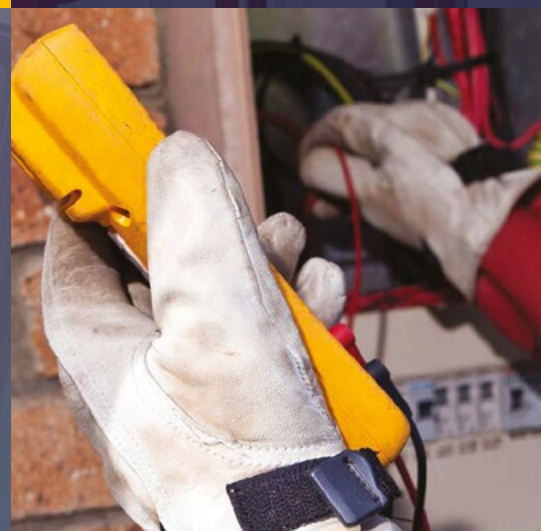
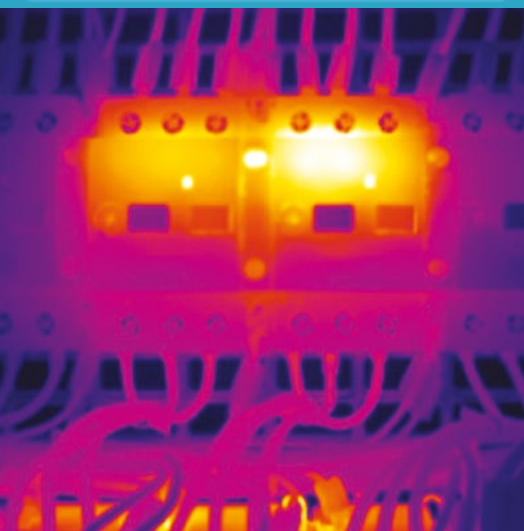
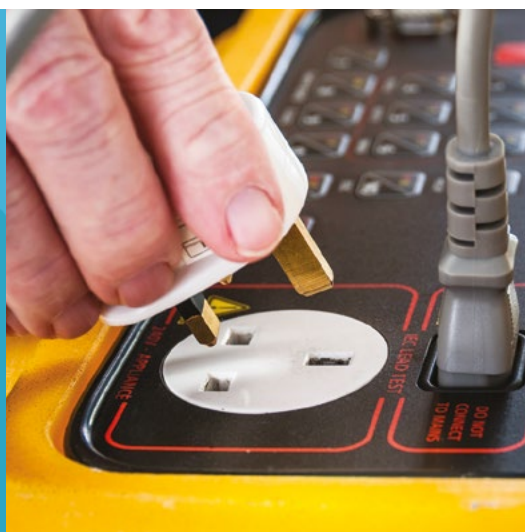
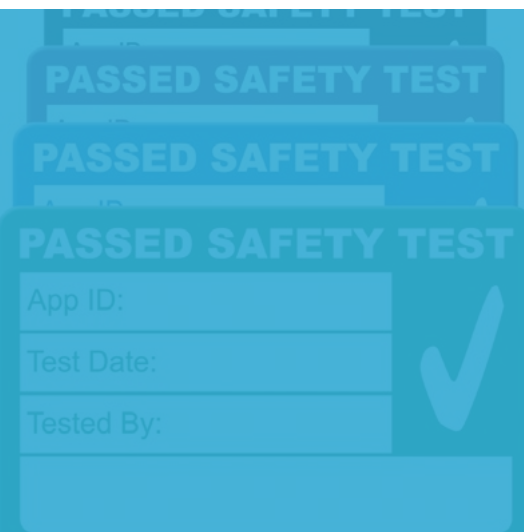
[www.visible-energy.net](http://www.visible-energy.net)



# Electrical Systems

Electrical systems are the heartbeat of any MEP system and the most hazardous should the design, install or testing verification not be followed stringently. Visible Energy are here to make sure that each system has been correctly installed to all of the latest industry and manufacturers standards and guidelines, cross checked against the design and capabilities and finally tested and commissioned before final handover.

- Activities include:
- Installation audit & report
  - Condition Surveys
  - Performance monitoring checks
  - Electrical load testing including switchgear and distribution equipment
  - Insulation Resistance Testing
  - Earth Fault Loop Impedance
  - Earth Electrode Testing
  - ELCB testing
  - Thermography
  - Portable Appliance Testing
  - Fire Alarm Control Panel and life safety systems verification
  - Fire Fighting System Verification
  - Plant validation





Visible Energy are committed to carrying out intrusive inspections, checks and tests on a number of HVAC activities and we are committed to adhering to all of the latest local and international standards and governing organizations.

Activities include:

1. Installation audit & report
2. Condition Surveys
3. Performance monitoring checks
4. Testing & Balancing
5. Chilled and domestic water performance evaluation and testing
6. Chilled water system flushing, treatment and chemical dosing
7. Water sampling and testing through a certified laboratory
8. Ducted systems including variable air volume, constant volume
9. Smoke extract testing
10. VAV system balancing
11. Staircase/lift/lobby pressurization testing and balancing
12. Smoke management system testing and balancing
13. Performing smoke simulation tests
14. Air Handling Unit systems
15. Specialist Exhaust systems
16. Environmental testing
17. Sound level testing
18. Vibration tests
19. Car Park ventilation systems
20. Kitchen Hood systems



Our highly skilled engineers and technicians are given thorough, formal in-house training based on the UK CSA's (Commissioning Specialists Association) training manuals as well as being thoroughly evaluated every 6 months.

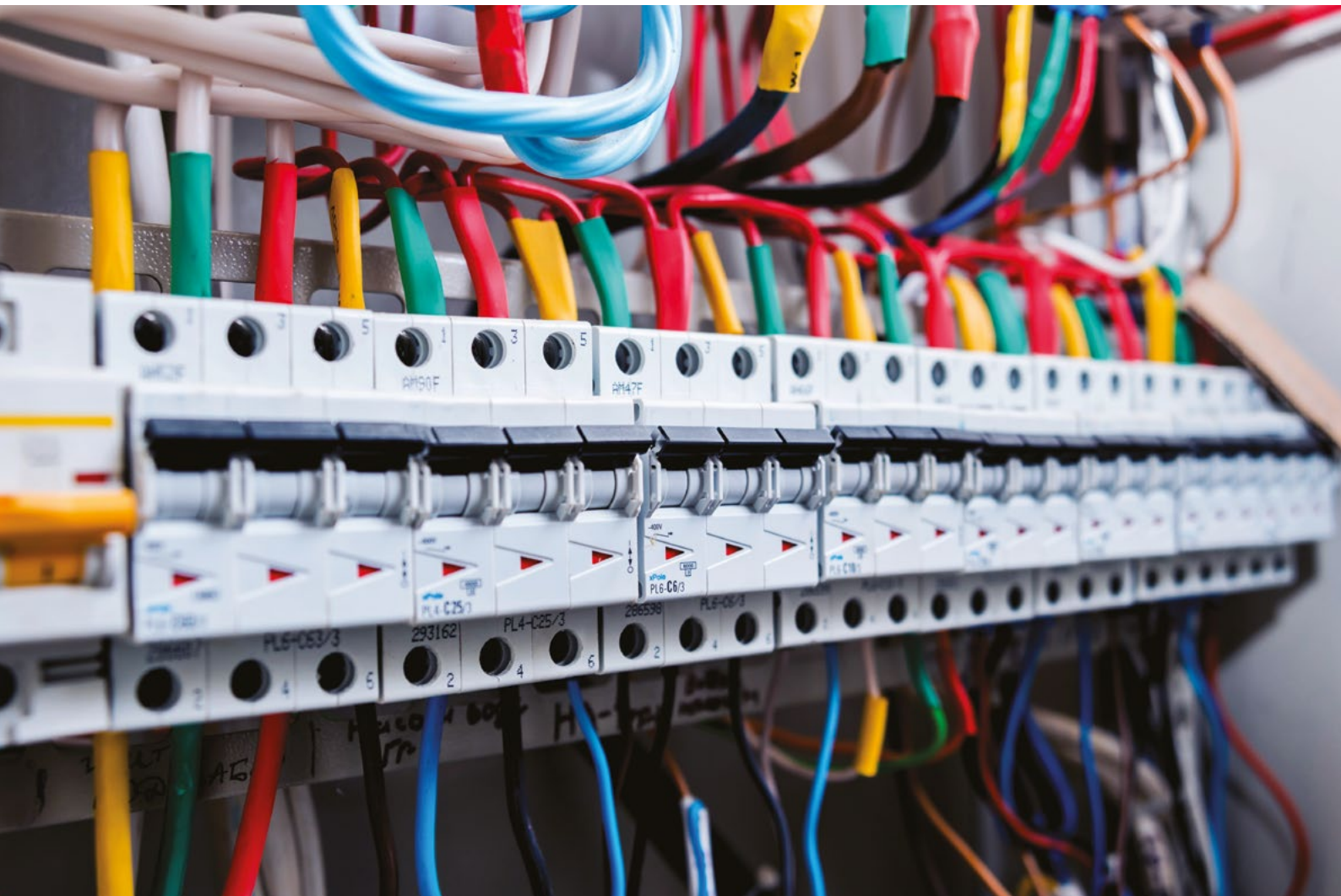


## Audits

All MEP installations should be subject to a periodic inspection and test every 3 years to ensure that the original installation is not showing signs of degradation. It is common for electrical equipment (lighting transformers, MCBs, ELCBs, etc) to start failing after a period of time and these breakdowns could become fire hazards. Therefore, a routine periodic electrical test is the best way to prevent a potential fire hazard from actually happening.

It would be our duty to carry out an intrusive inspection of the premises to highlight potential risks and recommend possible improvements, these checks will include:

- All Life safety systems including fire detection, fire fighting systems and equipment checked to ensure they adhere to the local DCD requirements
- All emergency systems functionally checked such as emergency lighting and all 3rd party equipment is checked to make sure it is interfaced and operates with the FACP
- All electrical circuits installed and managed to the current standard, a complete test of these circuits would also be recommended and available
- All drawings and load schedules verified with the actual installation
- All appliances would be Portable appliance tested
- Air and water systems checked to make sure the retail unit is achieving the desired design flow rates
- Reports will be created as a formal document with all of the faults broken down into priorities complete with photographs





# Commissioning Management

Commissioning is a systematic process of ensuring, verifying and documenting that a building facilities and systems performs in accordance with the design intent, contract documents, and the owner's operational needs. Implementing management protocols during installation phase is critical to ensuring the building owner/operator receives an efficient fully functional building from the offset. Below are a number of activities we can implement during or after building completion:

- Production and management of commissioning activities.
- Pre-commissioning/commissioning management of all MEP systems.
- Witness and verification.
- Project planning and coordination.
- Installation reviews and monitoring.
- Commissionability surveys/study's & appraisals.
- Commissioning plans & programmes.
- Factory acceptance tests.
- Project coordination including documentation reviews.
- Document creating, test reports, MS & RA & O&M's.
- Weekly/monthly project status reports.
- Production & management of IST activities.
- Building sign off.





# Electrical Design & Installation

Our team have decades of experience designing electrical installations, ranging from small-scale residential and retail developments, to major industrial and commercial properties. We carry out a full review of all relevant documentation to understand the maximum available load, and design the installation accordingly. We offer multiple energy efficient options relating to lighting, including LCS (Lighting Control Systems), LED lighting and solar. We are also proficient in designing the ELV systems, including Fire Alarm, BMS, CCTV, PAVA and Access Control.

Our installation teams have many years of experience carry out electrical installations to very high standards, ensuring compliance to DEWA regulations and BS7671. All electrical containment is selected as per the site conditions, and installed professionally and safely. All breaker/ disconnection devices are rated as per the maximum connected load, and the cables sizes are calculated accordingly. When the installation is completed, we carry out a continuity test and insulation resistance test to ensure all circuits are safe to energise. Once satisfied, we will then energise the circuits and carry out an EFLI (Earth Fault Loop Impedance) test and record the disconnection time of the ELCB. All results are recorded on official, DEWA approved test sheets and submitted to the client.

## Event Installation

With over twenty years of experience in electrical installations before expanding into carrying out electrical installations on events & shows, it is safe to say that we are true experts when it comes to electrical event installations. Visible Energy can assist with design, produce and install all of the necessary elements needed to transform a lacklustre, mundane event into a vibrant and exciting spectacle for a more than memorable event. No matter the industry; be it sport, music, sales or property, we are confident that we can install it successfully. We boast years of experience in event installation working for world renowned brands such as Showforce, Lightblue, Flow, Sweetwater and Laser Visio. Our clients consistently commend us for our punctuality, our truly personalised service and our ability to simply get the job done. This us an invaluable member of the team, for all your Event & Installation requirements. If you require any further information, please don't hesitate to contact us today on: +971 424 0811







## Training Scheme (VETS)

This is a scheme to help determine the exact skill set of each employee whose experience and background cannot be officially determined.

The region has a large supply of non-accredited, under-skilled workers posing as various tradesmen which is both counter-productive and potentially dangerous.

Visible Energy Training Scheme (VETS) was introduced internally to help ensure that our employees offer the most professional service with top-quality installations. By setting these robust standards, our customers and the industry can be assured that they are receiving the expertise they are paying for.

Using registered VETS certified employees gives you the confidence that the workforce deployed will complete the tasks correctly, efficiently and safely. This will also save costs at the testing and commissioning phase, as the works will have been completed to the current industry standards, first time.

VETS covers the following technologies:

- Electrical Installations
- Event installations
- HVAC Systems
- Testing & Commissioning

Pricing for the VETS scheme is based on the number of employees to be assessed. Existing registered members can benefit from reduced prices by combining scheme assessments. Applicants may also benefit by gaining competent person scheme registration within the assessment cost.

### How to apply

To apply for the Visible Energy Training Scheme (VETS) please call us on +971 424 08111. Alternatively you can apply direct online now or you can post a completed application form which can be downloaded from our website to the following PO Box 644832.

You will need the following documents to apply for the Visible Energy Training Scheme (VETS):

- VETS Registration Guide
- VETS Scheme Rules
- VETS Application Form
- VETS Fee Sheet





## Digital Asset Service



Partnering with Mobtag Limited, Visible Energy can now offer a wholly encompassed service to digitise your critical assets. All key documents in one place at the scan of a QR code. Push notifications for inspected plant and equipment, operating manuals, maintenance logs and linked locations. The Visible Energy Digital Asset Service simplifies compliance management and reduces equipment downtime.

The Digital Asset Profiles can incorporate:

- Documents
- Manuals
- Inspection Records
- Drawings
- Critical Spares Lists
- External URL's
- Serial Numbers

Allows:

- Push notifications for critical dates
- Third party access for service providers
- Password protection
- Private & Public data fields
- What3Words locations

The Digital Asset Service includes:

- Bespoke tagging for all environments
- Transfer of existing asset logs
- Incorporate asset tags to audits and inspection reports
- Setup critical dates





# Completed Projects

Project	Scope	Location	Client
Movenpick Marjan Island	Commissioning Management & Electrical Testing	RAK	Al Ali Construction
Theme Parks	Cold, Live Electrical Testing/Air & Water Balancing	Riverland	DPR
Theme Parks	Commissioning Management	Riverland	DPR
Various Retail Units	Cold, Live Electrical Testing/Air & Water Balancing	MERAAS Outlet Village	MERAAS
Various Retail Units	Cold, Live Electrical Testing/Air & Water Balancing	Dubai Marina Mall	EMAAR
Theme Parks	Cold, Live Electrical Testing/Air & Water balancing	Legoland	DPR
Office	Cold, Live Electrical Testing/Air & Water balancing	Opus Business Bay	Multiplex
Hotel	Air & Water Balancing	Aloft Hotel	Andrew Reid
Supermarkets	Cold, Live Electrical Testing/Air & Water balancing	Carrefour	MAF
Various Retail Units	Cold, Live Electrical Testing/Air & Water Balancing	-	EMAAR
Various Retail Units	Cold, Live Electrical Testing/Air & Water Balancing	-	MAF
Various Retail Units	Cold, Live Electrical Testing/Air & Water Balancing	-	MERRAS
Various Retail Units	Cold, Live Electrical Testing/Air & Water Balancing	-	Aldar
Various Retail Units	Cold, Live Electrical Testing/Air & Water Balancing	-	EMAAR
Class Rooms	HVAC System Performance Testing	Wellington School	GEMS
Hospital	Cold, Live Electrical Testing/Air & Water Balancing	Cleveland Clinic	Orbital
Airport	Cold, Live Electrical Testing/Air & Water Balancing	Terminal 1	RR Building
Hotel	Electrical Testing	Fairmont Palm Jumeirah	Manser Saxon
University	Fire Alarm Commissioning management	UAE University	AFC
Port	Commissioning Management	Khalifa Port	Hastie Int.
Hotel	Commissioning Management	Ritz Carlton	HLG
Data Centre	Commissioning Management	Al Khazna	Mubadulla
Office Block	Commissioning Management	ADNOC HQ	Sixco
Villa	Cold, Live Electrical Testing/Air & Water Balancing	Jumeirah Zabeel Saray	Dream Residence
Medical Clinic	Cold, Live Electrical Testing/Air & Water Balancing	Aster IVF	Innerspace
Al Maryah Mall	Commissioning Management & Live Electrical Testing	Al Maryah	James L Williams
UFC, Yas Island	Senior Electrical	Abu Dhabi	SM Productions
Festival Light Show	Electrical Light Installation	Festival City	Lazer Vision
DPR	Electrical Installation	Dubai Parks & Resorts	DPR
Asain Games	Senior Electrical	Jakarta	Flow
Legoland Waterpark & Hotel	Cold, Live Testing HVAC Tab	Dubai	Legoland
Arbor School	Cold, Live Testing HVAC Tab	Dubai	E2
DMCC	Resolving cooling issues. CHW flow was low. Air flow was intermittent and unbalanced	Dubai	DMCC
Khazna Data Centre	Commissioning Management	Dubai & Abu Dhabi	Crown House
Rove Hotel	Commissioning Management	EXPO 2020 site	Crown House Technologies
Aloft Hotel	HVAC Tab	Dubai	ARP
W Hotel	Cold, Live Testing HVAC Tab	Dubai	Drake & Skull
Emirates Post & RTA	MEP Audit	Dubai	Seveu
Abu Dhabi Midfield Airport	Commissioning Management	Abu Dhabi	Core Emirates
Seventh Heaven Al Barari	HVAC Tab		AGNI Properties



## PV – Photovoltaic

Why consume energy when you can generate it?

Solar panels are a great investment as they will help you save on energy bills and protect you against rising fuel prices.

Visible Energy are qualified & attested by DEWA. We offer installation services for all types of solar electric systems. The most common solar systems are roof mounted. We will carry out a full inspection and survey to ensure that you achieve the best possible solar exposure maximizing the generated electricity.

### Maintenance

The safe operation of solar PV installations under both normal and fault conditions is an essential consideration at the system design stage to ensure that proper energy outputs and safety levels are achieved. Once in operation, it is important to ensure that the long term performance of the system is not compromised by sub-standard installation or poor maintenance. Visible Energy can carry out an intrusive inspection of the installation to make sure it is safe and will operate effectively throughout its lifespan.



Tel: +971 424 08111 | Email: [info@visible-energy.net](mailto:info@visible-energy.net)

[www.visible-energy.net](http://www.visible-energy.net)



# Visible Cleaning Services

Welcome to Visible Cleaning Services. We are a British owned and operated company providing residential and commercial cleaning services in Dubai UAE.

We have a partnering company in the UK since 2019 and have experienced both residential and commercial projects such as golf clubs , 3 story town houses, bars and restaurants.

At Visible Cleaning Services, we use the latest technology available in window and solar panel cleaning. We use an Eco - Friendly ultra pure water system, ensuring a clean and complete finish to your windows. A pure water clean will give better, longer lasting results which will protect your windows in the long term. The purified filtered water is pumped through an extended pole brushed onto your window and once all windows frames and sills are cleaned a short rinse will be applied to remove all excess debris left on the window. The window will then be left wet and the purified/de-ionised water will dry perfectly, without any streaks or smears.

The benefits of using a water fed pole system include more privacy for the customer, less disturbance and improved safety and the quality of the job speak for themselves. With our equipment here at Visible Cleaning Services we are able to reach up to a height of 14m.

Our goal here is simple; to offer a high standard of window and solar panel cleaning to our customers for a fair price and reliable service and we highly value repeat custom.





VISIBLEENERGY



VISIBLECLEANING



Office No.608,  
B2B Tower, Business Bay,  
Dubai, PO Box 644832  
Tel: +971 424 08111  
Mob: +971 55 1199 222  
info@visible-energy.net  
www.visible-energy.net

